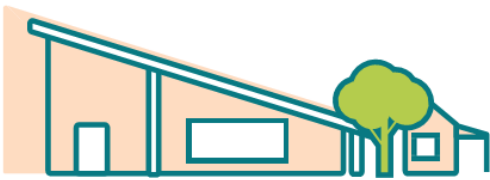


Mypolonga Primary School



2024 annual report to the Community

Mypolonga Primary School

Mypolonga Primary
School number:
0302

Partnership: Murraylands



School principal:

Sunyl Vogt



Government
of South Australia
Department for Education

Date of endorsement:

29/01/2025

Context Statement

Mypolonga Primary School caters for students from R-6. At the time of this report, the enrolment in 2024 is 148. Mypolonga Primary School is classified as Category 5 on the Department for Education Index of Educational Disadvantage. At the time of this report, the school population includes 4% Aboriginal students, 3% students with disabilities, 2% children/young people in care. Further information about the school is available on the school's website (including its context statement), as well as the My School website.

Data Source: Department for Education data holdings from Mid census captured in AUGUST 2024.

Governing Council Report

2024 School Council Chairperson's Annual Report

The year 2024 was another successful one for Mypolonga Primary School and the School Governing Council. With the threat of flooding and traffic disruptions caused by the levee largely behind us, the school was able to return to a sense of normalcy. However, nature still threw a couple of extreme foggy mornings our way, which caused some challenges with the bus runs and student drop-offs.

Throughout 2024, the school hosted a range of events that were enjoyed by students, parents, and staff alike. These included Family Fun Day, Sports Day, Colour Run, camps, school sleepovers, discos, masterclasses, as well as choir and school concerts. The School Council continues to receive positive feedback from both student representatives and staff at our Governing Council meetings.

The Governing Council has been actively involved in discussions around staffing, classroom structure, school budgeting, and the achievements and development of both students and staff. A significant change this year was the reintroduction of mid-year intake for Reception students. The School Council was informed and consulted about this adjustment.

Additionally, a parent approached a governing council member with a concern. The School Council executive and Principal ensured that the grievance policy was followed carefully, providing an appropriate process for hearing all parties involved and protecting their privacy. While the issue itself was not within the scope of the School Council's responsibilities, this situation led to a review and refinement of the grievance policy. We clarified the steps and actions to be taken, making it clearer for future reference. This process served as a valuable learning experience for everyone involved, highlighting the correct protocols and the role of the School Council. The matter was handled with respect and professionalism throughout.

It has been a pleasure to serve as the Chairperson of the 2024 School Governing Council. I would like to extend my thanks to all members for their dedication, valuable input, and contributions over the past year.

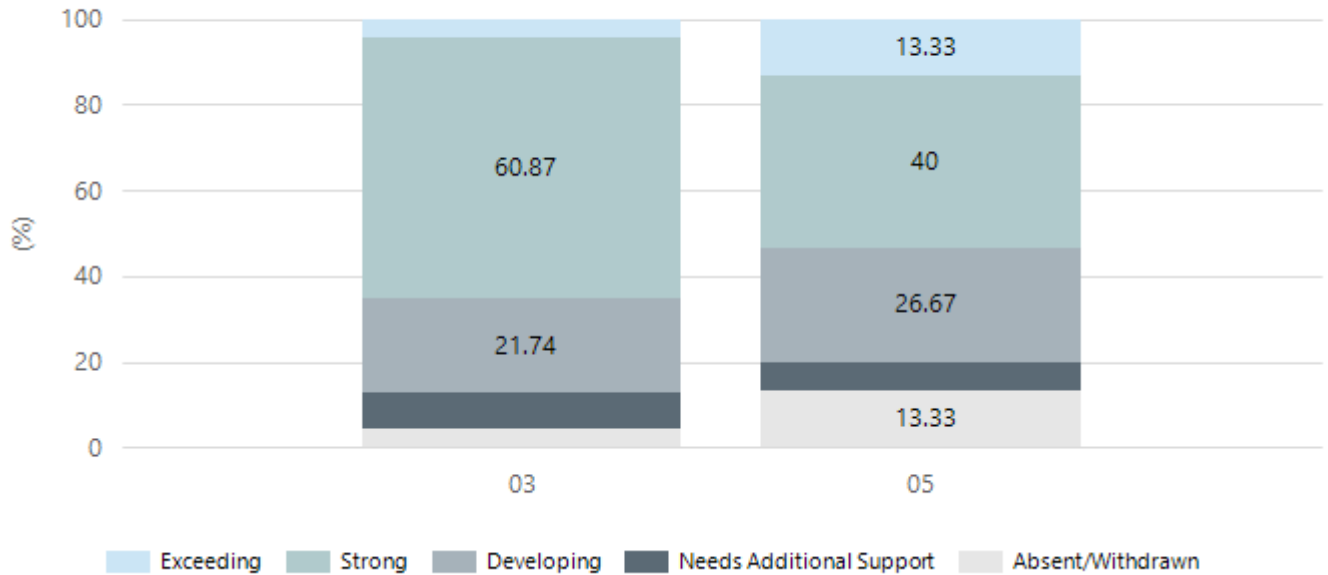
Ben Burdett
Governing Council Chairperson

Performance Summary

NAPLAN Proficiency

In 2023 the Australian Curriculum, Assessment and Reporting Authority (ACARA) - a Commonwealth Independent statutory authority - announced changes to NAPLAN performance reporting. The new approach replaces the previous numerical NAPLAN bands and the national minimum standard.

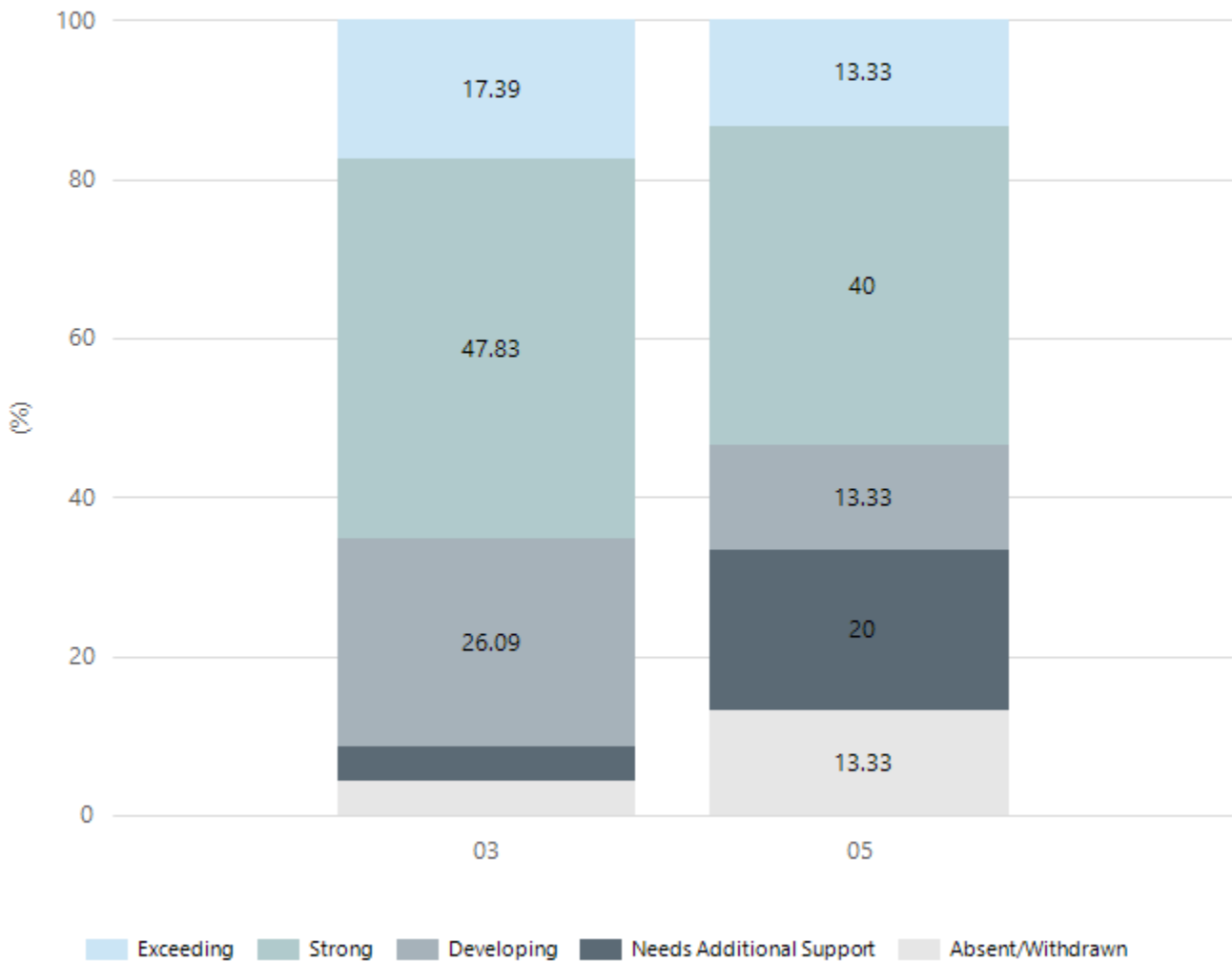
Numeracy



Year Level	03	05
Exceeding	1	2
Strong	14	6
Developing	5	4
Needs Additional Support	2	1
Absent/Withdrawn	1	2
Total	23	15

Data Source: Department for Education Assessment Data Holdings, 2024. If there are less than 6 students who sat NAPLAN in a school, no information will be shown. If a year level has less than 6 students, that year level will not be shown in NAPLAN results.

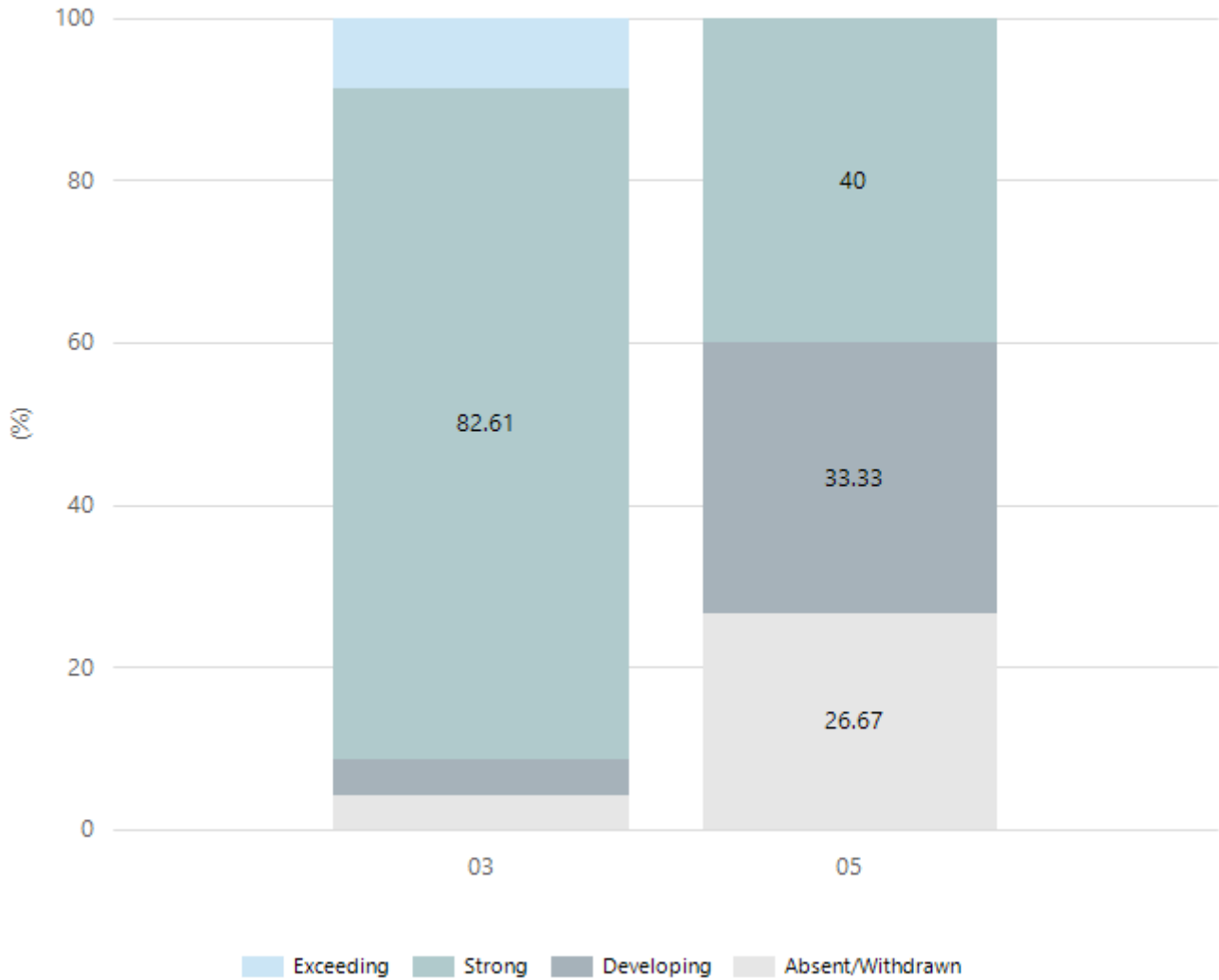
Reading



Year Level	03	05
Exceeding	4	2
Strong	11	6
Developing	6	2
Needs Additional Support	1	3
Absent/Withdrawn	1	2
Total	23	15

Data Source: Department for Education Assessment Data Holdings, 2024. If there are less than 6 students who sat NAPLAN in a school, no information will be shown. If a year level has less than 6 students, that year level will not be shown in NAPLAN results.

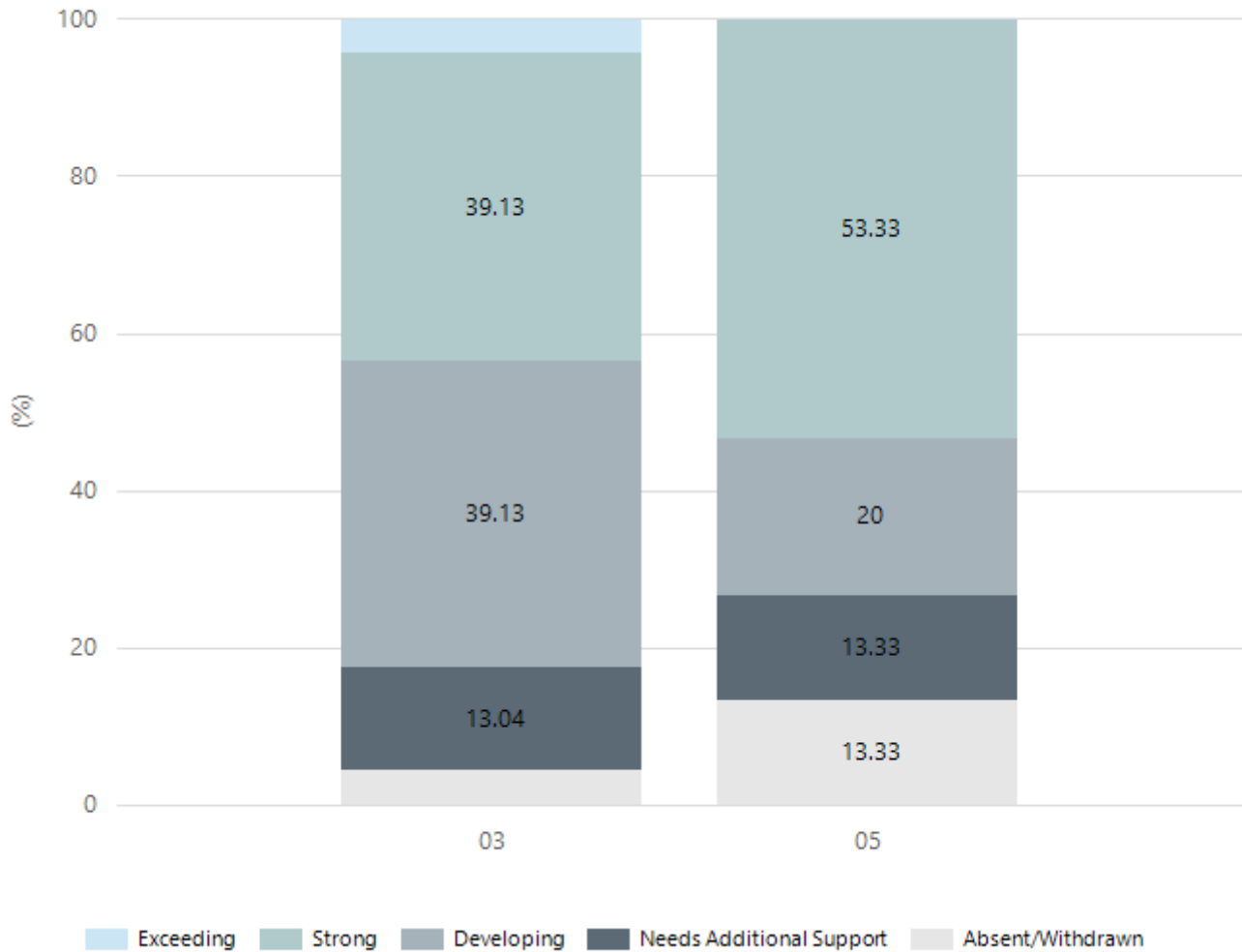
Writing



Year Level	03	05
Exceeding	2	
Strong	19	6
Developing	1	5
Absent/Withdrawn	1	4
Total	23	15

Data Source: Department for Education Assessment Data Holdings, 2024. If there are less than 6 students who sat NAPLAN in a school, no information will be shown. If a year level has less than 6 students, that year level will not be shown in NAPLAN results.

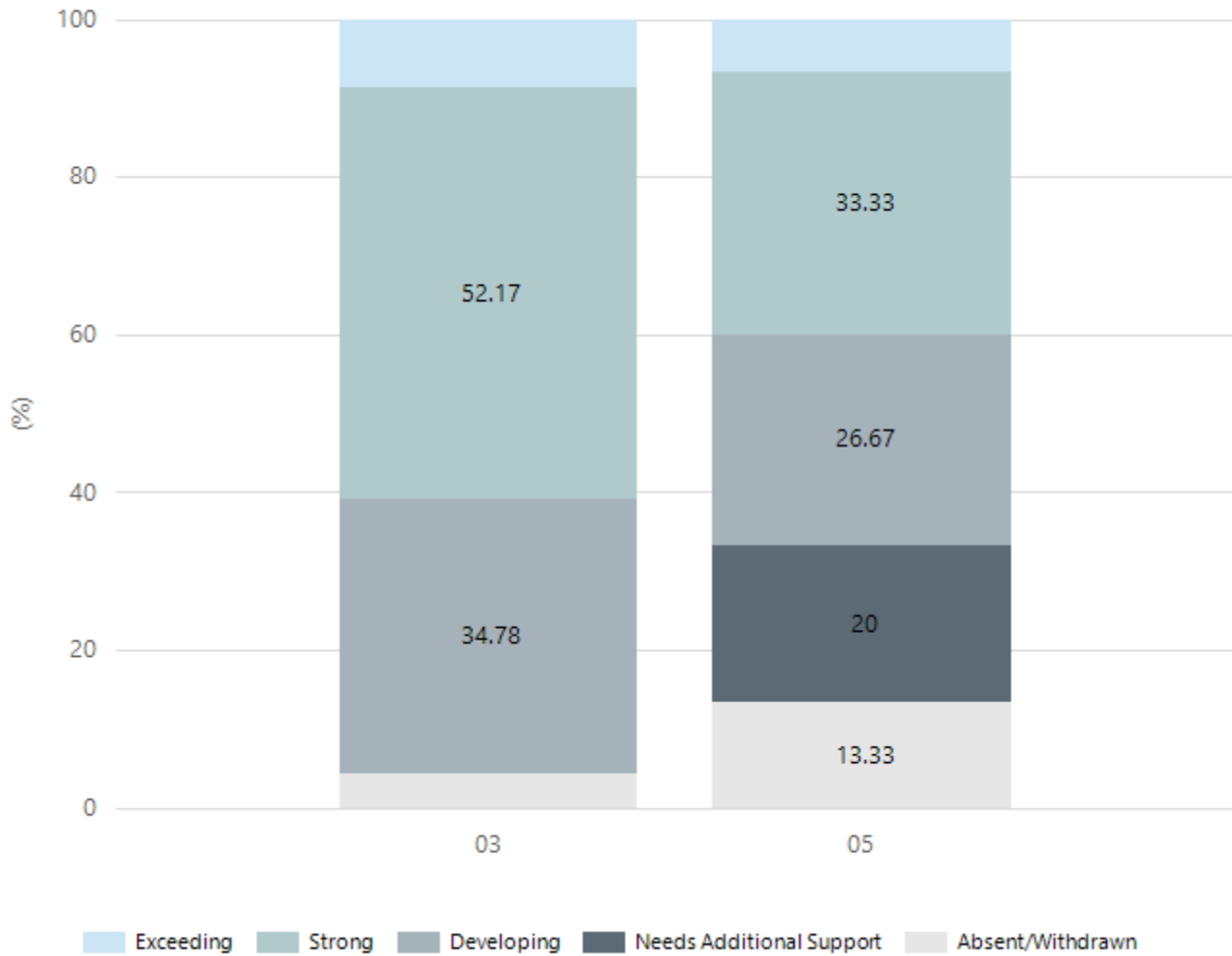
Grammar



Year Level	03	05
Exceeding	1	
Strong	9	8
Developing	9	3
Needs Additional Support	3	2
Absent/Withdrawn	1	2
Total	23	15

Data Source: Department for Education Assessment Data Holdings, 2024. If there are less than 6 students who sat NAPLAN in a school, no information will be shown. If a year level has less than 6 students, that year level will not be shown in NAPLAN results.

Spelling



Year Level	03	05
Exceeding	2	1
Strong	12	5
Developing	8	4
Needs Additional Support		3
Absent/Withdrawn	1	2
Total	23	15

Data Source: Department for Education Assessment Data Holdings, 2024. If there are less than 6 students who sat NAPLAN in a school, no information will be shown. If a year level has less than 6 students, that year level will not be shown in NAPLAN results.

School Attendance

Year Level	2022	2023	2024
Reception	88.3%	91.3%	88.7%
Year 01	84.3%	87.9%	95.0%
Year 02	87.4%	88.4%	90.0%
Year 03	81.5%	89.0%	91.4%
Year 04	85.7%	87.7%	90.4%
Year 05	85.7%	92.3%	84.6%
Year 06	84.4%	87.8%	90.5%
Total	85.4%	89.0%	90.1%

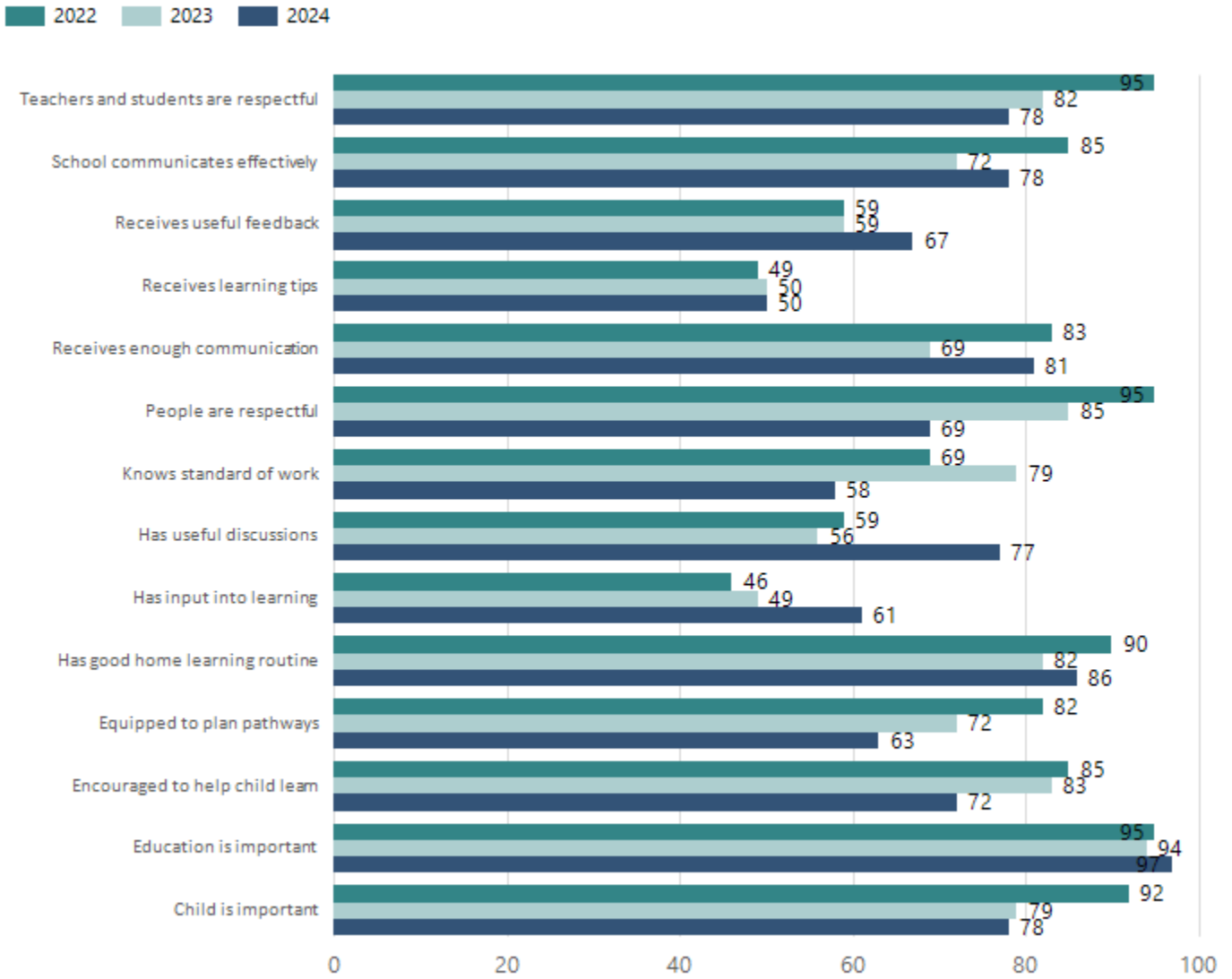
Data Source: Department for Education Attendance Data, Semester 1 Report 2024. A blank cell indicates there were no students enrolled. 'Primary Other' includes students enrolled in specialised education options. 'Secondary Other' includes students who have already spent a year at Year 12 and elected to undertake further study at Year 12.

Attendance Comment

In South Australia, all children and young people must be in school from 6 years to 16 years old. They must attend a government or non-government school full time. From age 16 to 17 however, young people must attend school or an approved learning program (such as an apprenticeship, traineeship, accredited course or university). Schools and parents must encourage and support students to come to school every day. Parents and caregivers must make sure their child is enrolled in a school, and attends school all day and everyday it is open, unless a child is sick or has an approved exemption. Teachers and leaders actively follow up when a student misses school, including recording all absences and non-attendance. All schools in South Australia have local attendance procedures governed under the Education and Children's Services Regulations 2020.

School Parent Opinion Survey Results

Proportion of agree/strongly agree response(%)



Data Source: 2024 Department for Education Parent Opinions Survey, Term 3 2024.

Intended Destination

Leave Reason	Number	%
IS - INTERSTATE	1	50.0%
TG - TRANSFERRED TO SA GOVERNMENT SCHOOL	1	50.0%

Data Source: Department for Education Destination Data Report, 2024. Data extract term 3 2024. Data shows recorded destinations for students that left the school in the previous year. Data is uploaded by schools in term 3 and may not reflect final or total figures at time of report creation.

Highest Qualifications held by the teaching workforce and workforce composition

All teachers at this school are qualified and registered with the SA Teachers Registration Board.

Qualification Level	Number of Qualifications
Bachelor's degrees or Diplomas	9
Postgraduate Qualifications	2

Data Source: Data extracted from Mandatory Workforce Information Collections as on the last pay date of June 2024. As self-reported by staff in the system.

Please note: Data includes staff who are Actively employed and on extended paid leave. Please note only the highest qualification of the Teaching staff is reported. Excludes any number of other certifications earned.

Workforce composition including indigenous staff

	Teaching Staff		Non-Teaching Staff	
	Indigenous	Non-Indigenous	Indigenous	Non-Indigenous
Full-Time Equivalents	0.0	8.4	0.0	6.0
Persons	0.0	11.0	0.0	9.0

Data Source: Data extracted from Mandatory Workforce Information Collection as on the last pay date of June 2024.

Please note: Data includes staff who are actively employed and on extended paid leave. "Indigenous category" is self-reported by staff in the system.

Financial Statement

Funding Source	Amount
Grants: State	\$1,842,111.34
Grants: Commonwealth	\$6,400.00
Parent Contributions	\$41,586.73
Fund Raising	\$31,758.49
Other	\$3,391.36

Data Source: School supplied data.